

luxCONTROL

DALI Monitor

Product Manual



TRIDONIC

Table of contents

1 Installation	3
2 Tool Bar	5
2.1 Data Related Settings	5
2.2 The Search Area	6
2.3 Select Interface	7
3 The Command List Window	8
3.1 Command Filter	8
3.2 Bookmarks	9
3.3 Insert Comment	9
4 Logging Function	10
5 DALI Usage	11
6 Search Devices	12
7 Change History	13

Installation

1. Installation

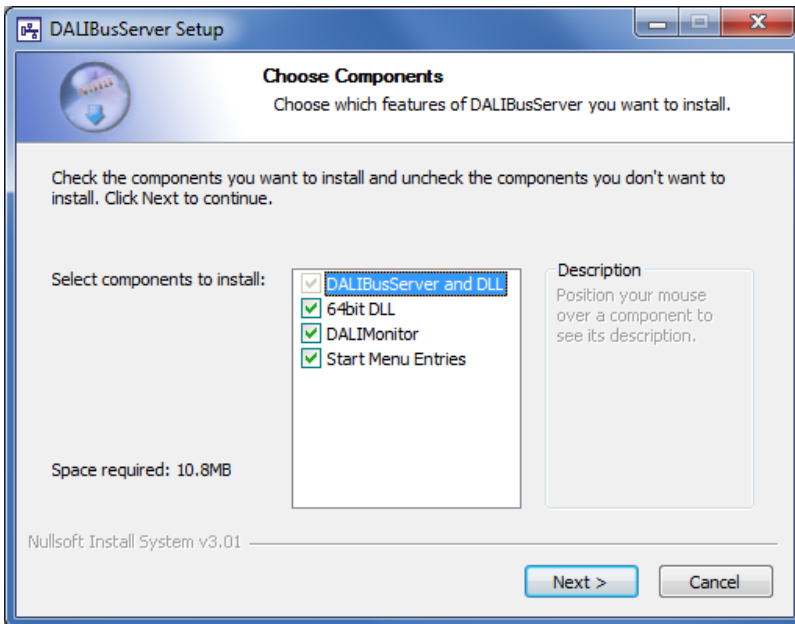
NOTICE

If you already installed the masterCONFIGURATOR you do not need to separately install the DALI Monitor – it has already been installed. Skip step 1 to 3 in this case.

1. Start the installation program

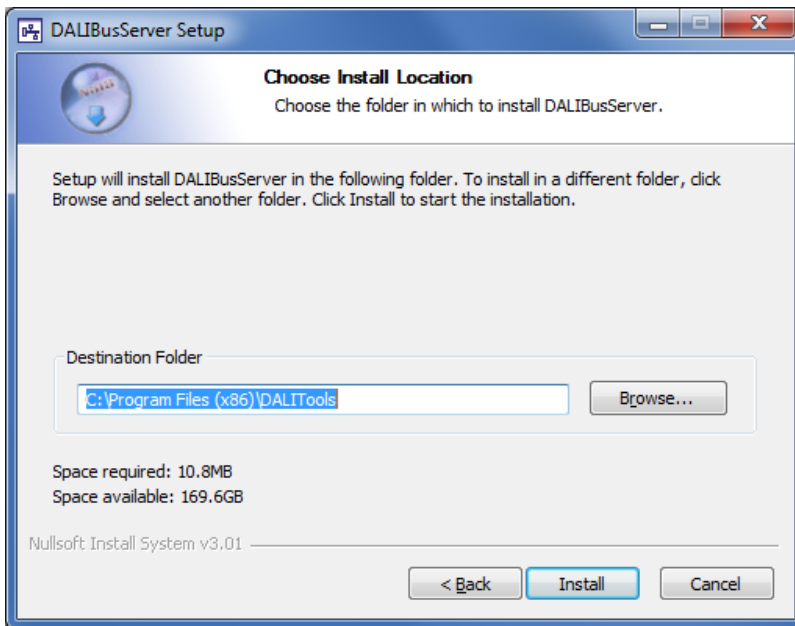


2. Choose the components to install. The DALI Monitor uses the BusAccess DLL and the DALIBusServer.exe, so this two components need to be installed. We recommend installing all components - which is the default.



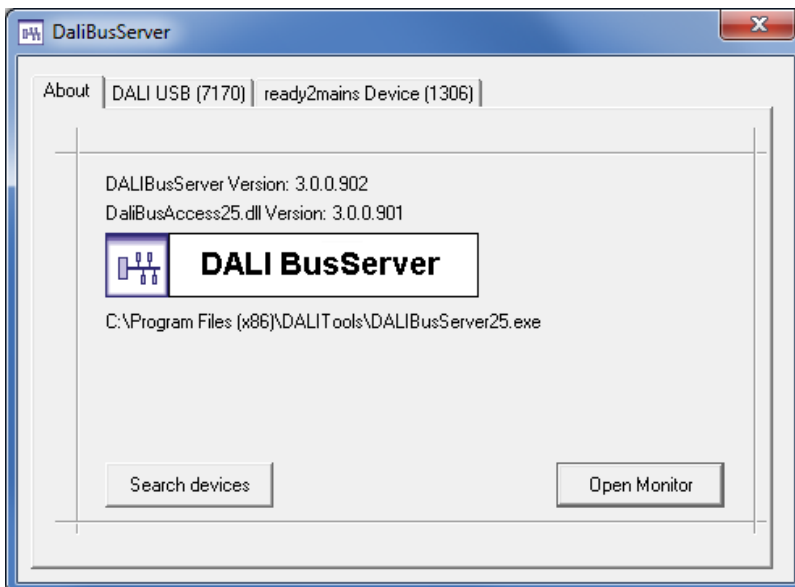
3. Specify the installation directory. We recommend to use the default directory, because other DALI tools from Tridonic (masterCONFIGURATOR, ...) are installed there as well.



Installation



4. Finish installation

5. Start the monitor. (Start – All Programs – DALITools – "DALIMonitor") or press the "Open Monitor" button of the DALIBusServer view.









The DALI BusServer  opens automatically when the DALI-Monitor  is started.

Tool Bar





2. Tool Bar

2.1. Data Related Settings



Image	Description
	<p>Open File This opens a previously saved data file. This is very useful to analyse a recorded protocol of bus traffic at a later time.</p>
	<p>Save File This saves the list of received commands into different file types.</p> <ul style="list-style-type: none"> _ DALI Monitor data (.dmd), _ ASCII text file (.txt), _ Command over time file (.cot). <div style="border: 1px solid #00aaff; padding: 5px; margin-top: 10px;"> <p>NOTICE</p> <p>For DALI Monitor data and ASCII text files (but not for command over time file) added comments and bookmarks are saved as well.</p> </div>
	<p>Log File This opens the settings for the Logging of DALI-traffic into files.</p>
	<p>Enable Data Reception This enables data reception. To reflect the state the background colour changes from red (stopped) to blue. DALI commands will be listed in the list view, the most recent command added to the bottom of the list.</p>
	<p>Stop Data Reception This stops data reception. To reflect the stopped state the background colour changes from blue to red. No data will be recorded in this mode (not even in the background).</p>
	<p>Clear Buffer This clears all data from the list of received commands</p>

Tool Bar

	Bus Interface Settings Search and configure the DALI bus interface (DALI USB, ready2mains Programmer, DALI SCI2...).
	Command Filter This pops up the command filter dialogue. For a detailed description see Command Filter , p. 8.
	Display All Commands / Display Filtered Commands Only When the command filter has been activated it is possible to toggle between the filtered and non-filtered view.
	Program Info, User Guide Displays the programs 'About Dialog'. This user guide is accessible here too.

2.2. The Search Area

find Hex: find Addr: find Cmd:

The area provides access to three search methods. Just enter the search string in one of the three fields and press ENTER. To repeat the search press F3.

Search DALI HEX Data

This will search for the given HEX string in the 'Hex Data' column.

Search DALI Address

This searches in the 'Address' column. Enter Address specifiers as follows:

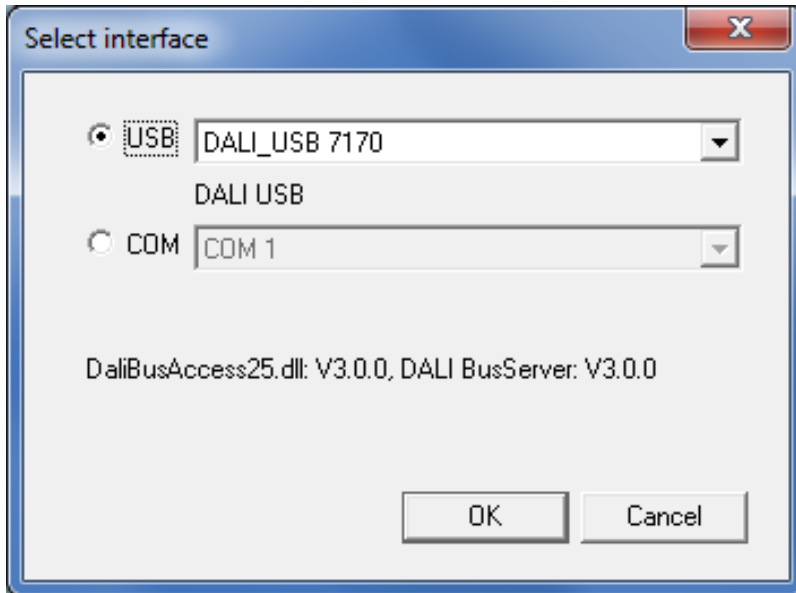
Parameter	Description
Unaddressed	unaddressed commands
Bcast	broadcast commands
*	special commands for all devices
Axx	DALI short address; xx = 0..63
Gxx	DALI group address; xx = 0..15
Cxx	eD class; xx = 0..7
C*	eD class; All classes
Ex	extender address; x = 0..7
@Ex	command addressed to a device on extender x

Tool Bar

_ Search Command Description

This will search for the given string in the 'Command' column.

2.3. Select Interface



i NOTICE

After changing the DALI interface, the commands in the DALI monitor will only be available after closing and reopening the DALI monitor.

The Command List Window

3. The Command List Window

Line #	Type	Hex Data	Address	Command	Time	Date	Comment
29	Query	01B5	A0	QUERY SCENE 5 LEVEL	09:19:19.237	18.10.2017	
30	Answer	FF		= 255 (0xFF)	09:19:19.252	18.10.2017	
31	Query	01B6	A0	QUERY SCENE 6 LEVEL	09:19:19.278	18.10.2017	
32	Answer	FF		= 255 (0xFF)	09:19:19.293	18.10.2017	
33	Query	01B7	A0	QUERY SCENE 7 LEVEL	09:19:19.319	18.10.2017	
34	Answer	FF		= 255 (0xFF)	09:19:19.335	18.10.2017	
35	Query	01B8	A0	QUERY SCENE 8 LEVEL	09:19:19.360	18.10.2017	
36	Answer	FF		= 255 (0xFF)	09:19:19.375	18.10.2017	
37	Query	01B9	A0	QUERY SCENE 9 LEVEL	09:19:19.401	18.10.2017	this could be your comment
38	Answer	FF		= 255 (0xFF)	09:19:19.416	18.10.2017	
39	Query	01BA	A0	QUERY SCENE 10 LEVEL	09:19:19.442	18.10.2017	
40	Answer	FF		= 255 (0xFF)	09:19:19.457	18.10.2017	
41	Query	01BB	A0	QUERY SCENE 11 LEVEL	09:19:19.483	18.10.2017	
42	Answer	FF		= 255 (0xFF)	09:19:19.498	18.10.2017	
43	Query	01BC	A0	QUERY SCENE 12 LEVEL	09:19:19.524	18.10.2017	
44	Answer	FF		= 255 (0xFF)	09:19:19.539	18.10.2017	
45	Query	01BD	A0	QUERY SCENE 13 LEVEL	09:19:19.565	18.10.2017	
46	Answer	FF		= 255 (0xFF)	09:19:19.580	18.10.2017	
47	Query	01BE	A0	QUERY SCENE 14 LEVEL	09:19:19.606	18.10.2017	
48	Answer	FF		= 255 (0xFF)	09:19:19.621	18.10.2017	
49	Query	01BF	A0	QUERY SCENE 15 LEVEL	09:19:19.647	18.10.2017	
50	Answer	FF		= 255 (0xFF)	09:19:19.662	18.10.2017	
51	Query	01A8	A0	QUERY EXTENDED FADE TIME	09:19:19.710	18.10.2017	
52	Answer	00		= 0 (0x00)	09:19:19.726	18.10.2017	
53	Special	C106	*	ENABLE DEVICE TYPE 6	09:19:19.753	18.10.2017	
54	AppExt DT6	01FD	A0	QUERY FAST FADE TIME	09:19:19.780	18.10.2017	
55	Answer	00		= 0 (0x00)	09:19:19.795	18.10.2017	
56	Special	A100	*	TERMINATE	09:19:19.821	18.10.2017	

DALI commands are displayed in a list, the most recent command on the bottom of the list.

For every DALI command the command type, the HEX code, the command address, a plain text description of the command and the receive time is displayed.

A right-click in the list window opens the context menu with the following entries:

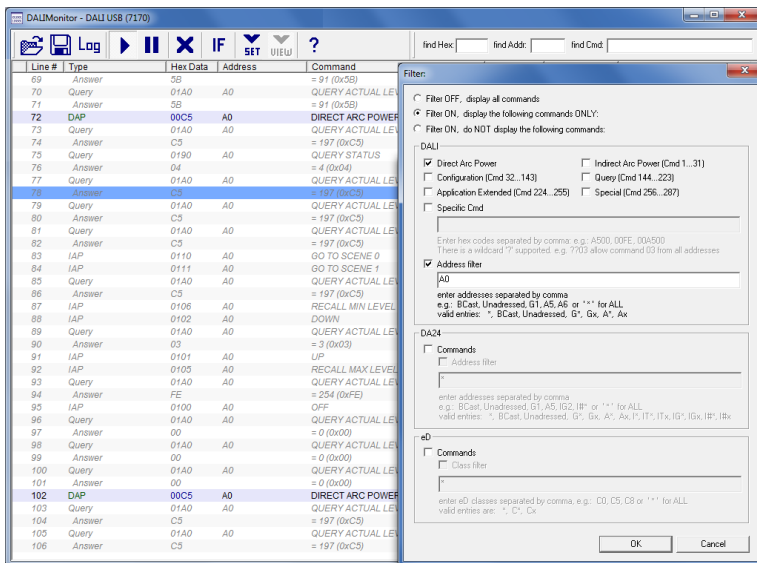
Line #	Type	Hex Data	Address	Command	Time	Date	Comment
37	Query	01B9	A0	QUERY SCENE 9 LEVEL	09:19:19.401	18.10.2017	
38	Answer	FF		= 255 (0xFF)	09:19:19.416	18.10.2017	
39	Query	01BA	A0	QUERY SCENE 10 LEVEL	09:19:19.442	18.10.2017	
40	Answer	FF		= 255 (0xFF)	09:19:19.457	18.10.2017	
41	Query	01BB	A0	QUERY SCENE 11 LEVEL	09:19:19.483	18.10.2017	
42	Answer	FF		= 255 (0xFF)	09:19:19.498	18.10.2017	
43	Query	01BC	A0	QUERY SCENE 12 LEVEL	09:19:19.524	18.10.2017	
44	Answer	FF		= 255 (0xFF)	09:19:19.539	18.10.2017	
45	Query	01BD	A0	QUERY SCENE 13 LEVEL	09:19:19.565	18.10.2017	
46	Answer	FF		= 255 (0xFF)	09:19:19.580	18.10.2017	
47	Query	01BE	A0	QUERY SCENE 14 LEVEL	09:19:19.606	18.10.2017	
48	Answer	FF		= 255 (0xFF)	09:19:19.621	18.10.2017	
49	Query	01BF	A0	QUERY SCENE 15 LEVEL	09:19:19.647	18.10.2017	
50	Answer	FF		= 255 (0xFF)	09:19:19.662	18.10.2017	
51	Query	01A8	A0	QUERY EXTENDED FADE TIME	09:19:19.710	18.10.2017	
52	Answer	00		= 0 (0x00)	09:19:19.726	18.10.2017	
53	Special	C106	*	ENABLE DEVICE TYPE 6	09:19:19.753	18.10.2017	
54	AppExt DT6	01FD	A0	QUERY FAST FADE TIME	09:19:19.780	18.10.2017	
55	Answer	00		= 0 (0x00)	09:19:19.795	18.10.2017	
56	Special	A100	*	TERMINATE	09:19:19.821	18.10.2017	

The 'Clear Buffer' and 'Start/Stop Reception' entry offer the same functionality as the corresponding buttons in the tool bar.

3.1. Command Filter

The command filter offers the possibility to display only commands of interest. Choose 'Filter...' from the context menu or the filter button in the tool bar to open the filter dialogue:

The Command List Window



In the screenshot above the 'Filter ON, display the following commands ONLY' button has been clicked. As a result, the filtered commands are displayed normally whereas all other commands (those that do not match the filter criteria) are greyed out and displayed in italics.

3.2. Bookmarks

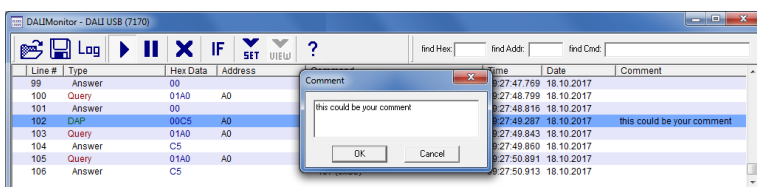
Select a line by a left click with the mouse and press Ctrl-F2 to set a bookmark. The bookmark symbol will be displayed in the first column.

Line #	Type	Hex Data	Address	Command	Time	Date
83	IAP	0110	A0	GO TO SCENE 0	09:27:42.655	18.10.2017
84	IAP	0111	A0	GO TO SCENE 1	09:27:42.959	18.10.2017
85	Query	01A0	A0	QUERY ACTUAL LEVEL	09:27:43.573	18.10.2017
86	Answer	00C5	C5	DIRECT ARC POWER = 197 (0xC5)	09:27:43.589	18.10.2017
87	IAP	0106	A0	RECALL MIN LEVEL	09:27:43.927	18.10.2017
88	IAP	0102	A0	DOWN	09:27:44.287	18.10.2017
89	Query	01A0	A0	QUERY ACTUAL LEVEL	09:27:44.618	18.10.2017
90	Answer	03	03	= 3 (0x03)	09:27:44.633	18.10.2017
91	IAP	0101	A0	UP	09:27:44.659	18.10.2017
92	IAP	0105	A0	RECALL MAX LEVEL	09:27:45.080	18.10.2017
93	Query	01A0	A0	QUERY ACTUAL LEVEL	09:27:45.664	18.10.2017

Bookmarks are useful to mark a command of interest. You can step through all bookmarks by pressing F2.

3.3. Insert Comment

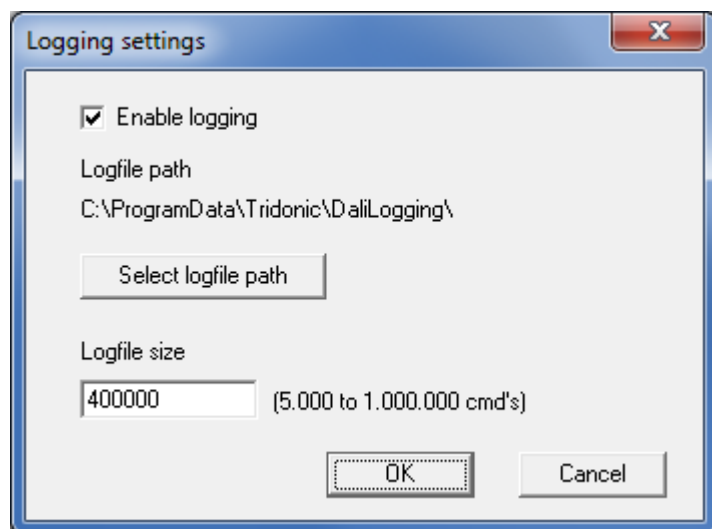
It is possible to add a comment to a command line. Select the desired line and open the context menu by right-clicking the mouse. 'Add/Edit Comment...' opens the comment dialogue:



The comment will be displayed in the last column.

Logging Function

4. Logging Function



The entire DALI traffic is continuously logged in the DALI Monitor. For each DALI command, an entry is created and displayed in the DALI Monitor.

To prevent that the data volume gets to large and data is accidentally deleted or lost, the data is regularly saved. This makes sure that a complete diagnosis of the DALI system is possible.

The logging procedure is as follows:

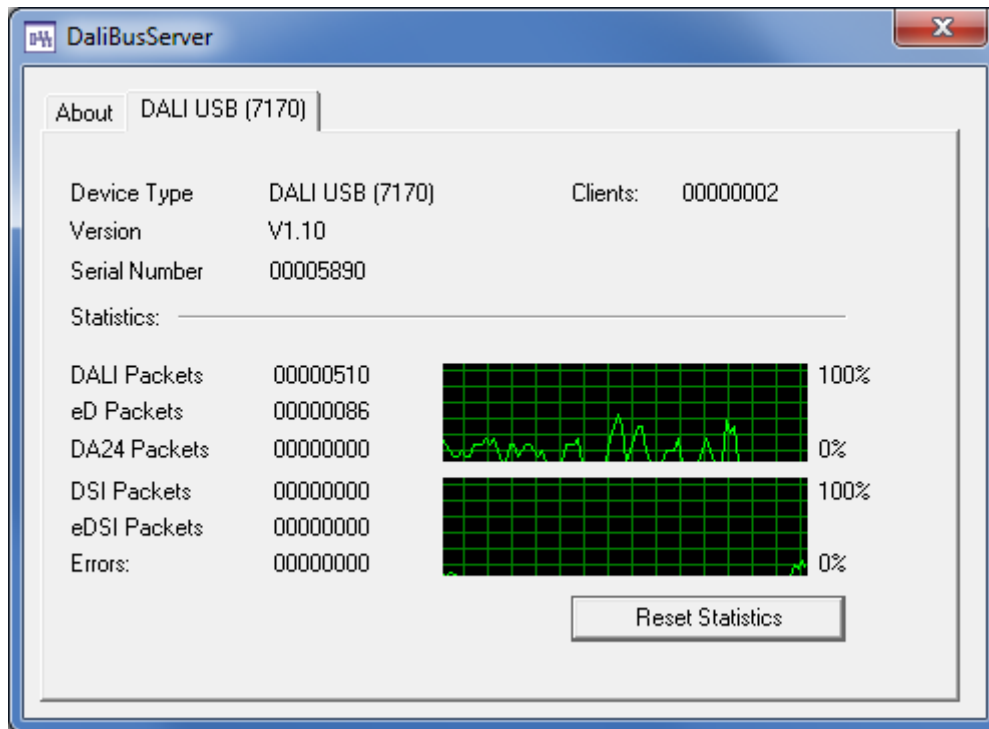
- _ The Logfile size defines the max. number of commands in the DALI Monitor before they are saved to a file and stored on the local computer.
- _ The standard value for the Logfile size is 500,000 commands, this value can be changed to a value between 5,000 and 1,000,000.
- _ The file ending is .dmd
- _ The path to the file is:
 - _ For Win 7, 8, 10: C:\ProgramData\Tridonic\DALILogging
 - _ For Win XP: C:\Documents and Settings\All Users\Application Data\Tridonic\DALILogging

i NOTICE

By default, the operating system does not show the directory where this file is in. To make the directory and the file visible, it may be necessary to change the folder options of the operating system: The settings for the folder options must be changed to "Show hidden files, folder, and drive". The exact procedure to do so, is different for different operating systems.

DALI Usage

5. DALI Usage

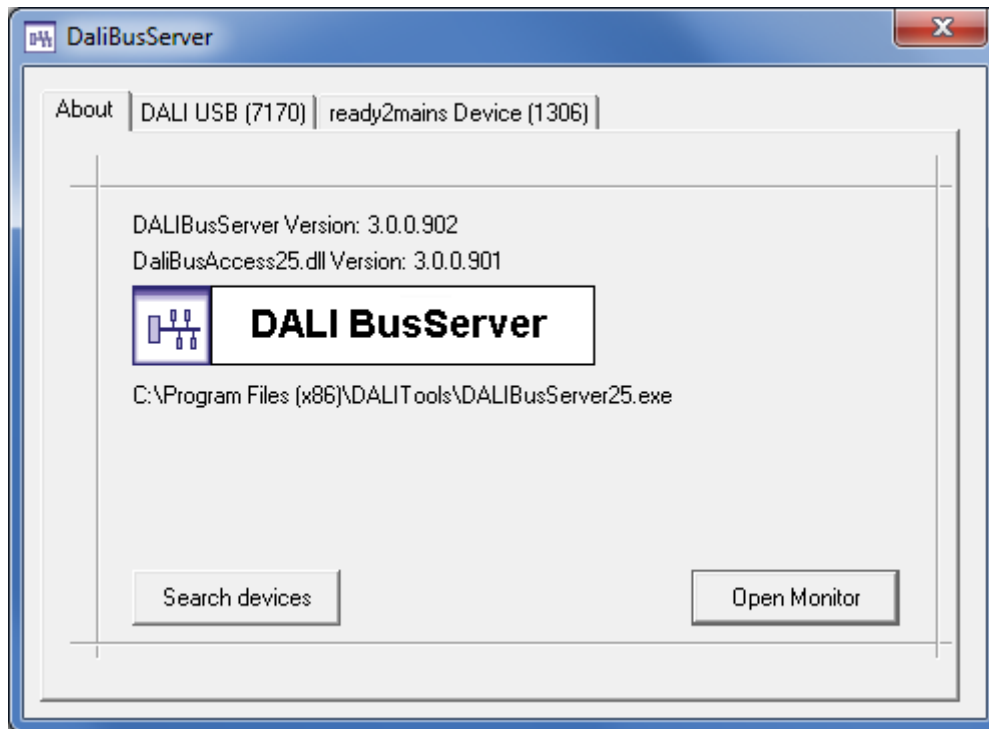


The DALI USB window shows the following information:

- _ First graph (Actual usage): 500 ms steps, total 45 sec
- _ Second graph (Average usage): 10 sec steps, total 15 min, average 10 sec

Search Devices

6. Search Devices



Refresh the list of the plugged "interfaces"

Change History

7. Change History

Version	Date	Changes / Comments
3.0.0.57	12.2017	New: <ul style="list-style-type: none"> _ Settings for the logging function _ Line numbers (Line #) _ Toolbar _ Prepared for DA24 (controls) commands _ Command filter options
2.9.2.54	07.2017	New: <ul style="list-style-type: none"> _ Logging of DALI-traffic into files Eliminated defect: <ul style="list-style-type: none"> _ Problems by running the DALI-Monitor for a longer period of time
2.9.0.39	04.2017	Interface port handling improved
2.8.1.26	12.2016	New: <ul style="list-style-type: none"> _ Supports now "Unaddressed" devices _ DALI-usage is graphical present
2.8.0.9	09.2016	New: <ul style="list-style-type: none"> _ Expansion of the function "save as" with a new file type option ".cot" (Command over time) _ The ready2mains Programmer could be used as a DALI device _ The handling of more than one USB port is now possible _ Timestamp now in milliseconds _ New toolbar symbols for DALIMonitor and DALIBusServer
2.7.5	07.2015	Add cmd for ready2mains
2.6.4	12.2014	Updated for DALI V2 commands

Change History

2.5.3	02.2007	changed version to 2.5 and exe name to DALIMonitor25 to reflect that the monitor now uses the DALIBusServer25
1.1	06.2006	minor enhancements
1.0	12.2005	